



ALWAYS

EVY®

PROFESSIONAL



WELCOME TO EVY

"Hi, I'm Tracey Bazzano-Lauretta. As a former hair stylist and salon owner, I created the EVY Professional range based on years of using hair styling tools and not being completely satisfied. EVY Professional is the culmination of decades of experience and expertise and passion for hair.

Our company name - AquaBaci - translates to water (Aqua) and kiss (Baci) in Italian. This is at the core of every EVY PROFESSIONAL product – a kiss of hydration for the love of healthy, fabulous hair. Everything we do is for the love of hair and we do it with passion. The EVY range is all about giving stylists and consumers the very best and most technologically advanced hair tools that work to hydrate and promote hair health while styling.

I hope you love our EVY products as much as I have loved creating them.

Enjoy x"



Tracey Bazzano-Lauretta

Founder EVY Professional

EVY[®]
PROFESSIONAL



CREATED BY STYLISTS FOR STYLISTS

EVY PROFESSIONAL is the new generation in advanced ion-powered hair tools, delivering hair-loving minerals to the hair shaft so that it rehydrates, reconditions and restores moisture balance to the hair as you style.

Hair is an extension of who we are. It defines our sense of well being. It is our crowning glory. Luxuriant locks that are healthy and shiny boost confidence and self-image.

Hair defines our personalities and how we project ourselves to the world. It is little wonder how much time, effort and investment we put into making sure our hair is the very best it can be.

EVY PROFESSIONAL is a hair range that understands the pivotal role that hair plays. Created by stylists for stylists, it is all about starting with the basics and making sure that hair is strong, healthy and vibrant...getting those elements right for our hair extends to those same qualities in ourselves – we all want to feel strong, healthy and ready to take on the world!

EVY PROFESSIONAL is a complete hair tool and product range created for the love of hair. It puts the ultimate hair tools into your hands to empower you with hair that is healthy, shiny and uber-stylish.

HAIR HYDRATING TECHNOLOGY

It all started from post volcanic minerals from a remote region in Japan, where for centuries locals have enjoyed the benefits of strong, healthy hair and youthful skin.

EVY has taken these highly beneficial ionic generating minerals and infused them into their hair tools. Not the first hair tool range to tap into these powerful minerals but most certainly the first to feature an impressive 32 hair hydrating and strengthening minerals along with added features. Other hair tools may feature 1-2 minerals at most!

So what do these post-volcanic wonders do for hair?

They impart negative ion and infrared energy, which work to micronize or break down water molecules so they are better able to penetrate the hair follicles.

The result is pure inner hair hydration. It is hair that is shiny and healthy, even if you use your EVY tools frequently. No more dry, brittle hair from overuse of dryers or irons. Hair heaven has arrived!

EVY iQ-ONEGLIDE

The styling superstar! Not only does this iron straighten and style hair to sleek and silky perfection, it also infuses it with hydration and moisture to leave it looking super shiny and healthy.

KEY FEATURES

- Patented 32 natural negative ion and far infrared generating minerals infused into the plate for a superpower hydration boost and hair repair.
- 24-carat gold infused plate, for smoother glide and deeper hydration.
- 3-strip plate design for more even tension and faster results.
- Digital temperature control from 130-210 degrees Celsius.
- Automatic shut-off function after 60 minutes.
- Soft touch finish for easier curling and styling.
- Metal ceramic heater for faster heating.
- Available in both 1" and 1.5" plates.
- 3 Metre professional swivel cord rotates 720° for maximum convenience and durability.
- Universal voltage 100-240V~50/60 Hz.
- Heat Proof Bags for easy travelling and storage.
- 24 months warranty.



EVY E-STYLER

The EVY E-STYLER with Mineral Infused Technology allows you to lock in hydration for the perfect salon finish.

Extra long blades for easier, faster styling and smoothing!

KEY FEATURES

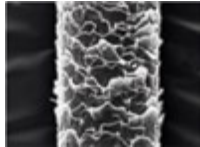
- 1" (25mm) Professional Styling Iron with extra long plates.
- Digital display allows for precise temperature control from 160-230°C.
- Flexible floating plates with longer blade for faster styling and smoothing.
- Mineral Infused Technology for inner hydration and ultimate shine.
- Super smooth glide to straighten, smooth and curl all hair types safely.
- Intelligent sleep mode, automatically turns off if left unattended after 60 minutes.
- MCH heating element.
- 3 Metre professional swivel cord rotates 720° for maximum convenience and durability.
- Universal voltage 100-240V~50/60 Hz.
- Heat Proof Bags for easy travelling and storage.
- 24 months warranty.

EVY INFUSALITE DRYER

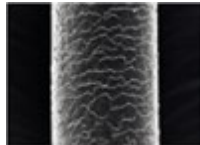
This is one of the lightest, brightest dryers ever! Featuring the same smart patented 32 natural negative ion and far infrared generating minerals, it infuses hair with inner hydration and moisture. Each blast leaves hair smoother and more hydrated. And as one of the lightest dryers on the market, it gives you more freedom for styling prowess.

KEY FEATURES

- Ultra lightweight - only 378g.
- 2000 watts of super power.
- Mineral Infused Technology for inner hydration and super shine.
- Two different size nozzles for greater styling options.
- 3 variable heat and fan speeds.
- Lock in cool shot button.
- A convenient hang ring.
- 3m professional cord.
- Also includes soft carry/dust bag.
- 12 month warranty.



Hair **BEFORE** Mineral Infused Technology



Hair **AFTER** Mineral Infused Technology





EVY theBOSS DRYER

theBOSS puts you in charge of your blow dry, every time, ensuring easy, effortless styling with it's super-powerful and super-hydrating technology.

Featuring 2400 watts of power. Patented EVY Mineral Technology to lock in inner hydration for faster drying and styling.

KEY FEATURES

- Super long-lasting motor life.
- Cool Shot button.
- Anti-slip number controls.
- Ceramic grill for longer life.
- 100% recyclable components.
- Italian parts fully assembled in Italy.
- No toxic paints.
- Zero electromagnetic charges emitted.
- Flexible 3 metre cord.
- Two nozzles - Diffuser and Silencer available.
- 24 months warranty



EVY E-CURL PRO

The EVY E-CURL PRO with Mineral Infused Technology allows you to create healthier looking hair with volume that lasts. The ultimate styling tool collection with 5 interchangeable barrels is a must for all professionals and consumers demanding the ultimate styling tool collection.

Beware of Addiction!



E-CURL PRO
2021 FINALIST
Most Innovative Hair Tool

KEY FEATURES

- 5 interchangeable heads with easy locking system
- Mineral Infused Technology for inner hydration and ultimate shine
- 8/19mm conical
- 18/25mm conical
- 19/25mm oval with cool tip
- 19/32mm oval with cool tip
- 32mm classic round with clamp
- Finger grip on barrel for safe removal
- LCD display for precise temperature control 160-210C / 320-410 F
- Professional heat resistant travel and storage bag
- Protecting heatproof mat and glove
- Ergonomic - super lightweight
- Auto shut off after 60 minutes
- 3 meter cord 720° (degree) swivel cord
- Universal voltage 100-240V 50/60 Hz
- 24 months warranty



EVY RESTYLE

The EVY RESTYLE Hot Brush effortlessly restyles and re-creates your blow wave, delivering a total “I’ve just walked out of the salon” look, every time!

Designed for styling dry hair, and equipped with heat resistant nylon bristles and Mineral Infused Technology, you can also create waves, curls or smooth dry hair in minutes - the ultimate true time saver and restyling hero!

KEY FEATURES

- Hot brush for effortless restyling.
- Heat resistant nylon bristles.
- 38mm lightweight ceramic barrel.
- Mineral Infused Technology for inner hydration and ultimate shine.
- LCD display for precise temperature control 130-230° C.
- Cool tip for safe use.
- Thumb rest for easy balance.
- Sleep mode/auto shut off after 60mins.
- 3 meter cord 720° (degree) swivel cord .
- Universal voltage 100-240~ V /50 /60 Hz.
- 24 months warranty.



EVY PROFESSIONAL Paddle Brush

The EVY PROFESSIONAL brushes have been created by stylists for stylists to ensure superior quality and performance and to provide the perfect brush! Handmade in Korea this brush offers soft cushion features for gentle scalp stimulation.

KEY FEATURES

- Super lightweight comfortable styling.
- Gentle massaging bristles set in a natural rubber cushion for improved scalp circulation and gentle brushing.
- Mineral infused bristles to emit ionic energy for smoother shinier brushing, eliminating static and fly away hair.
- Soft touch rubber handle for ergonomic smooth handling and comfort.



EVY VEGAN Cushion Brush

Inspired by, and manufactured to mimic natural bristle, and deliver smooth, static-free hair.

The ultimate, meticulously crafted vegan cushion brush.

KEY FEATURES

- Rubber cushion pad designed to gently massage the scalp.
- Soft touch, comfortable handle, hand finished to remove sharp edges
- Suitable for fine to med hair types including hair extensions.



Manufactured to mimic natural bristle

EVY QUAD-TEC Brush

The EVY Professional Quad-Tec Brushes have been created by stylists for stylists to ensure superior quality and performance and to provide the perfect brush! Handmade in Korea with a unique Quad-Tec combination of carbon, ceramic, twisted bristle and concave barrel features for the ultimate brush for both professional and home use.

KEY FEATURES

- Twisted nylon bristles for extra grip and no slipping whilst gently massaging the scalp.
- Mineral infused bristles to emit ionic energy for smoother shinier brushing, eliminating static and fly away hair.
- Carbon and Ceramic coated barrel provides faster drying and styling.
- Concave shaped vented barrel retains heat for faster drying with better tension for extra volume or smoothing.
- Super lightweight comfortable styling.
- Soft touch rubber handle for ergonomic smooth handling and comfort.
- Available in sizes: 25mm, 33mm, 43mm and 53mm.



EVY SCHIMA Mixed Bristle Brush

The EVY SCHIMA brushes have been created by stylists for stylists to ensure superior quality and performance when styling. The SCHIMA series features hand-crafted Schima Timber, cultivated from sustainably managed forests, and mixed bristles to easily create the perfect tension and shine.

KEY FEATURES

- Handle and barrel withstands extreme temperatures.
- Natural and Nylon bristles for the ultimate grip and high heat resistance.
- More grip for a smoother, shinier blow-out.
- Mineral infused bristles to emit ionic energy for smoother, shinier hair whilst eliminating static and fly-aways.
- Comfortable ergonomic hand grip for smooth handling and comfort.
- Available in sizes: 25mm, 30mm, 40mm.

EVY CRYSTAL Paddle Brush

EVY CRYSTAL Shine Paddle for the ultimate in brush luxury. The EVY PROFESSIONAL brushes have been created by stylists for stylists to ensure superior quality and performance when styling. EVY CRYSTAL Shine Paddle features ion-generating luminous crystals for extra luxury and shine, along with a convenient finger/hand grip for your comfort.

KEY FEATURES

- Luxury luminous ion-generating crystals for the ultimate pampering.
- Designed for pampered brushing after blow drying (direct heat to crystals not recommended).
- Ergonomic comfortable handle grip for balance and comfort.
- Large soft air-cushioned base for gentle control on sensitive scalps.
- Easy detangling of longer hair including extensions.
- Smooth flexible bristles that are kind to your hair reducing breakage.

EVY ECO Detangling Brush

The EVY ECO Detangling Brush is the head-hugging, soft-cushioning ALL eco-friendly brush you need for smooth and tangle-free hair!

Made from 100% compressed, biodegradable natural plant starch (Maize and Casava) - the curved, moulded bristles and cushioned paddle gently massage the scalp, preventing damage to the hair caused by breakage. Your ultimate hair buddy is ideal for use on wet or dry hair.

KEY FEATURES

- Made from sustainable and biodegradable materials.
- PETA-certified cruelty-free.
- Plant Based/Vegan Friendly.
- Innovative wave-shape design.
- Ergonomically designed to fit the palm.
- Leaves no toxic material once fully degraded.
- Available in Vanilla, Blush & Mint.



ORGANIC SOLUTIONS FOR HAIR

Our Smoothing Emulsion, a shampoo that will straighten/ smooth hair in just one step (insalon service) in 1-2 hours with 80% organic wild crafted ingredients.

e-smooth DOES not contain formaldehyde and parabens and is free of all nasties and is compatible with all chemical services and hair types.

Totally safe with no hidden nasties.

A blend of 4 organic acids to create smooth silky hair that will last up to four months .

The end result is hair that will be silky and shiny and super easy to manage.

We recommend the e-smooth Bathe and Restore, Seal or Tame to maintain and ensure longevity of your e smooth service.

e-smooth contains wild-crafted organic ingredients to pamper the hair with nourishing oils and extracts. 100% natural ingredients including fruit extracts, Tamarind, Apple, Sugar Cane Milk with Hyaluronic Acid and Ceramides combine for added moisture. Shine, silkiness and ease of styling is achieved naturally and safely, to create smooth, manageable, hydrated hair.

BATHE / RESTORE

Deep moisturising shampoo and conditioner with wild crafted organic ingredients to pamper your hair with nourishing oils and extracts.

Natural ingredients including fruit extracts, green tea, blueberry, and wheat germ, with Hyaluronic Acid and Ceramides for added moisture. Paraben and Sulfate free.

Suitable for all hair types and especially beneficial for dry or chemically treated hair.

SEAL OIL SERUM

Seal Repairing Serum with luxurious ingredients including ceramides ,daffodil oil ,jojoba, Argan oil and Omega 3 to provide nutrition, extra hydration and shine whilst locking in moisture .

High in extracts and natural plant oils ,seals and enables easy and fast moisturization and repair

Reduces the formation of split ends -leaving hair shiny, silky and healthy.

TAME SMOOTHING CREAM

Silk-refined cream with 100% natural ingredients including daffodil , jojoba and argan oils, green tea and ceramides to lock in moisture.

Nourish and moisturise hair giving extraordinary silkiness and shine without weighing down your hair.

Especially for fine hair, obtaining the same benefits of applying Seal Repairing Serum allowing more volume and texture while styling.



EVY PROFESSIONAL
e-smooth - Your Ultimate
Smoothing Experience



EVY REBONDING REJUVENATION SYSTEM



The EVY PROFESSIONAL Rebonding Rejuvenation system will permanently straighten curly, frizzy, unruly hair - actually changing its texture to be soft, shiny and incredibly smooth.

With the correct application performed by your certified EVY Technician, you will achieve easy to manage, shiny hair.

The EVY PROFESSIONAL Rebonding System is an advanced formulation containing selected extracts for the ultimate in permanent hair rebonding (straightening) and rejuvenation.

KEY INGREDIENTS

Infused with OLEA EUROPAEA (Olive Oil extract), which contains at least four different antioxidants, also produces LINOLEIC ACID that prevents water from evaporating. This leaves the hair shaft filled with moisture so that no external moisture can create frizz!

IONISED WATER to ensure a perfect inner hydration balance. Also containing RESVERATROL - the potent antioxidant goodness found in grapes to help fight the ageing process. Together this POWER TRIO will assist in ensuring that hair is not only naturally straight but hydrated, smooth and shiny.

REPAIRING MASK

With the power trio of ionised water , resveratrol and olive oil extract ,this rich nourishing mask will silken and gloss all hair types.

Use weekly for best results, leaving on for for up to 30 minutes.

SUMMARY

- Olive oil extract for extra silkiness, softness and hydration.
- Ionised water emitting negative ions for inner hydration.
- Resveratrol to help fight the ageing process.
- Straightens the hair permanently, reducing after care and styling.
- Does not contain formaldehyde.



EVY ACCESSORIES



DIFFUSER

With 12 tips perfect for soft, natural styling for all occasions.

Works with theBOSS dryer.



SILENCER

Light, small and easy to install accessory that replaces the filter of the dryer to reduce noise.

Using technology to eliminate sound waves for amazingly quieter results.

Works with theBOSS dryer.

EVY AWARD-WINNERS

AAA
AUSTRALIAN
HAIR FASHION
AWARDS



EVY IQ-ONEGLIDE

2017 Most Innovative
Styling Tool

beautyheaven
com.au
Glosscar
Awards 2017
RUNNER-UP



EVY INFUSALITE DRYER

2017 Best New Hair Dryer



E-CURL PRO

2021 FINALIST
Most Innovative Hair Tool



EVY®

PROFESSIONAL